

as sung in Lichfield Cathedral

THREE SEVENTEENTH CENTURY SETTINGS OF

The Litany

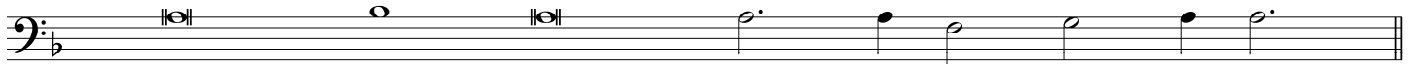
edited by John B. Lott, Mus.B. (Oxon.), Organist of Lichfield Cathedral

Number 2 – set to music in D minor by

HENRY LOOSEMORE, MUS.B. (CANTAB.)

Organist of King's College, Cambridge (1627–1670)

edited by Richard Shakeshaft



O God, the Father of Heaven : have mercy upon us mis - er - a - ble sin - ners.

A grand staff with a vocal line in the treble clef and piano accompaniment in the bass clef. The key signature is one flat (B-flat) and the time signature is common time. The vocal line begins with a forte (*f*) dynamic and a mezzo-forte (*mf*) dynamic. The piano accompaniment consists of chords and moving lines.

mis - er - a - ble sin - ners.
O God, the Fa - ther of Heaven : have mer - cy up - on us mis - er - a - ble sin - ners.
mis - er - a - ble sin - ners.



O God, the Son, Redeemer of the world : have mercy upon us mis - er - a - ble sin - ners.

A grand staff with a vocal line in the treble clef and piano accompaniment in the bass clef. The key signature is one flat (B-flat) and the time signature is common time. The vocal line begins with a forte (*f*) dynamic and a mezzo-forte (*mf*) dynamic. The piano accompaniment consists of chords and moving lines.

O God the Son, Re - deem - er of the world : have
mis - er - a - ble sin - ners.

A grand staff with a vocal line in the treble clef and piano accompaniment in the bass clef. The key signature is one flat (B-flat) and the time signature is common time. The vocal line begins with a mezzo-forte (*mf*) dynamic. The piano accompaniment consists of chords and moving lines.

mer - cy up - on us mis - er - a - ble sin - ners.
mis - er - a - ble sin - ners.